

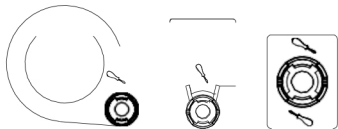
## emerald Electricity Advisor Instructions

### Pack Includes:

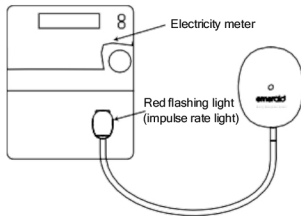
Electricity Advisor	x3 self-adhesive mounts
Alcohol wipe	Cable-tie
Metal magnetic bracket	3M tape

(spare tape provided if repositioning of mount is required)

### Self-adhesive mounts



### INSTALLATION GUIDE



FOR MORE  
INFO VISIT US  
[enciser.com](http://enciser.com)  
troubleshooting,  
video guides,  
and tips!

1. Locate the red flashing light on the front of your emerald electricity meter, which flashes when you use power.

**IMPORTANT:** Your meter may have more than one red light. To correctly identify the red light that measures your energy usage, turn on a high-use appliance like a heater or electric oven and identify which red light increases in flash rate.

NOTE: If you have solar your red light may not flash during the day when you are not using power from the grid - turn your solar off and the red light will start to flash.

2. Record the number on the meter which explains how many times your meter flashes for each kWh of energy your home uses (impulse rate). This number is usually located on the front of your electricity meter close to the red light. You need this number later after installing the enciser app.

EXAMPLE: If your electricity meter is labelled '1kWh/imp', the impulse rate is 1.

TIP: Visit our support page at [enciser.com](http://enciser.com) for more advice about your impulse rate.

3. Clean the meter using the alcohol wipe. Allow the area to completely dry. Select the most appropriate self-adhesive mount so the sensor will be directly over the red light. In most cases this will be the rectangular mount.



4. Remove the backing tape and place the mount over the flashing red light. Press for 30 secs to allow the tape to stick.

**IMPORTANT:** Ensuring the red light is visible through the small hole in the mount. If you need to reposition the mount, please use the spare 3M tape provided.

5. Attach the sensor to the mount and turn the emerald Electricity Advisor on by pressing and holding the power button on the back of the unit for >1 sec. The light on the front of the emerald Electricity Advisor flashes 3 times to indicate the device is ON. The same light will flash once to indicate the device is OFF.

6. Use the magnetic feet to place the emerald Electricity Advisor on the external side of the meter box.

**NOTE:** If your meter box is not magnetic, please install the metal magnetic bracket to your meter box using the 3M tape provided.

**IMPORTANT:** To ensure a strong Bluetooth signal, place your emerald Electricity Advisor outside of the meter cabinet (not inside) and on the side of the cabinet.



#### INSTALL THE ENCISER APP



Visit your app store to download the FREE enciser app or scan the QR code.



#### TECHNICAL SPECIFICATIONS

Wireless mode	Bluetooth 5.0
Operating frequencies	2.4 GHz
Operating temperature	-10~45°C
Signal transmitter dimensions	70x57x29mm
Sensor dimensions	30x22x17.3mm
Range	Indoor: 20m / Outdoor: 60m
IP	IP65
Warranty	1 year

Warranty information available at [enciser.com](http://enciser.com)

#### WARNING

Take care when working near your electricity meter box.  
Do not touch any wires or exposed terminals.  
Do not modify any electrical equipment.